

THE INFORMATION CONTAINED IN THIS DRAWING IS THE SOLE PROPERTY OF SYNERGY MFG. ANY REPRODUCTION IN PART OR WHOLE WITHOUT THE WRITTEN PERMISSION OF SYNERGY MFG IS PROHIBITED.

Revisions			
Rev.	Description	Date	Approved
A	Initial Release Per ECO 19-132	11/19/19	A.S.



## Jeep Wrangler Parking Brake Cable Bracket

Installation Instructions

Applications:

2018+ Jeep Wrangler (JL)



TITLE:  
**JEEP JL PARKING BRAKE CABLE  
 BRACKET INSTALLATION INSTRUCTIONS**

SIZE	DWG NO:	REV
<b>A</b>	<b>8818-01-INST</b>	<b>A</b>
SCALE: N/A		PAGE 1 OF 6



## JEEP WRANGLER JL PARKING BRAKE CABLE BRACKET INSTALLATION INSTRUCTIONS

Thank you for purchasing the best aftermarket products available for your vehicle. We strongly feel that the parts you are about to install should meet or exceed your expectations for performance. Proper assembly is critical to the performance of these components and the vehicle as a whole. Please take the time to carefully read these instructions and familiarize yourself with the installation procedure before working on your vehicle. If you have any questions PLEASE contact Synergy Manufacturing BEFORE beginning installation. Thanks again for supporting Synergy – enjoy the performance benefits of the best aftermarket products available for your vehicle!

**Synergy Manufacturing**

**Phone: (805) 242-0397**

**Email: support@synergymfg.com**

Modifying or otherwise altering vehicle components may cause the vehicle to handle differently than originally designed. It is the driver’s responsibility to familiarize themselves with the performance and handling characteristics of the modified vehicle. Vehicles with larger diameter than stock tires must be driven carefully and cannot be expected to perform as stock or meet OEM performance with regard to handling, braking or crash performance. Ensure all replacement components are compatible with vehicle capacities so as not to overload components, especially tires. It is up to the individual to ensure that the vehicle and all components are compatible with the intended vehicle use, including load ratings, road conditions, and driver abilities. Thorough and frequent vehicle inspections are recommended to ensure a safe and reliable state of readiness, especially after off-highway use.

### PARTS LIST

8818-01 Jeep Wrangler JL Parking Brake Cable Bracket		
QTY	Part Number	Description
1	881801-PL	JEEP JL PARKING BRAKE CABLE BRACKET
2	N/A	RUBBER GROMMET, 1.25 OD .125 THICK .875 ID

### GENERAL NOTES

- These instructions are also available on our website; [www.synergymfg.com](http://www.synergymfg.com). Check the website before you begin for any updated instructions and additional photos or videos for your reference.
- This parking brake cable relocation bracket will allow the cables to droop out farther than stock. The bracket was designed for up to typical 4” lift rear shock applications. It is up to the installer to verify that the cables are long enough to allow full droop.
- This parking brake cable bracket requires a minimum of 2” rear bump stop spacing to prevent interference between the bracket and the rear differential.

### TOOLS REQUIRED

- 10 and 13mm socket and ratchet or wrench

### ESTIMATED INSTALLATION TIME

**1/4 Hour**

## INSTALLATION

1. Installation can be done on the ground. There is no need to lift the vehicle off the ground or remove the wheels and tires. Ensure the Jeep is parked on flat level ground and in gear or in park. Chock the wheels so the vehicle cannot roll.
2. Make sure the parking brake is disengaged (lever in the vehicle is down). Remove the cables from the rear axle, starting with the ends at the brake backing plates. The ends may be removed by pulling the cables forward while simultaneously pulling the arms out of the brake backing plates, towards the center of the Jeep. With the ends disconnected from the brake backing plates, remove the cables from the tabs on the axle housing.
3. With the cables free, remove the stock bracket securing the cables to the body of the Jeep above the rear cross member. See **Figures 1 and 2**.



**Figures 1 and 2. Removing the Factory Parking Brake Cable Bracket**

4. Pull the cables towards the front of the Jeep, and re-orient them so they run under the cross member instead of over it.
5. Remove the two 10mm nuts on the studs holding the rear TPMS module to the rear frame cross member directly above the rear axle. Slide the Synergy Parking Brake Cable Bracket over the studs and re-install the nuts. See **Figure 3**.



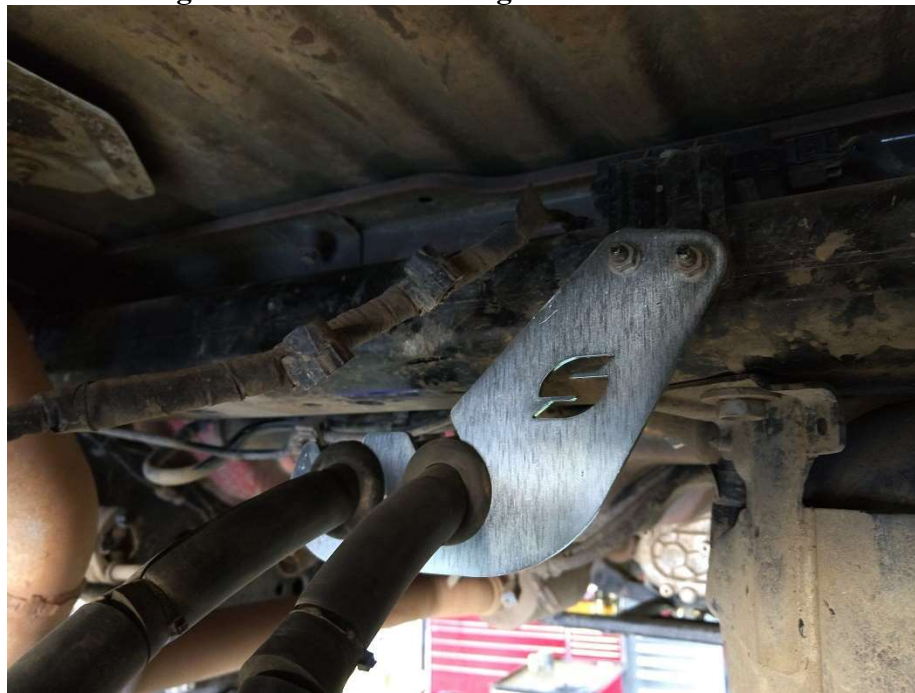
**Figure 3. Synergy Parking Brake Cable Bracket Installed**



- Slide a rubber grommet on each parking brake cable. Once the grommet reaches the thick foam padding it may be easiest to 'roll' the grommets up the cables. Slide the grommets up until they are far enough up the cables that they align with the Synergy Parking Brake Cable Bracket. Slip the grommets into the slots in the Synergy Parking Brake Cable Bracket. **Figures 4, 5 and 6.**



**Figures 4 and 5. Installing Grommet on Cable**



**Figure 6. Correctly Installed Synergy Parking Brake Cable Bracket**

- Re-install the parking brake cables in the brackets on the axle housing. Then re-connect the cables to the arms on the brake backing plates. Once the cables are re-connected, be sure to check parking brake operation by setting the parking brake and then putting the vehicle in gear and trying to 'drive' against the parking brake to make sure the vehicle does not roll.

**Installation is Complete**