

ARB AIR LOCKER *Air Operated Locking Differentials*

RD101 Dana 30,27 SPL,3.54 & DN

Specs:

Axle Spline	27 tooth, Ø29.5mm [1.16"]
Ratio Supported	3.54:1 & down
Ring Gear ID	114.3mm [4.50"]
Ring Gear OD	183mm [7.2"]
Ring Gear Bolts	10 bolts on Ø133mm [5.25"]
Ring Gear Torque	75Nm [55 ft-lb]
Backlash	0.15-0.25mm [0.006-0.010"]
Bearing Cap Torque	81Nm [60 ft-lb] (see note 4)

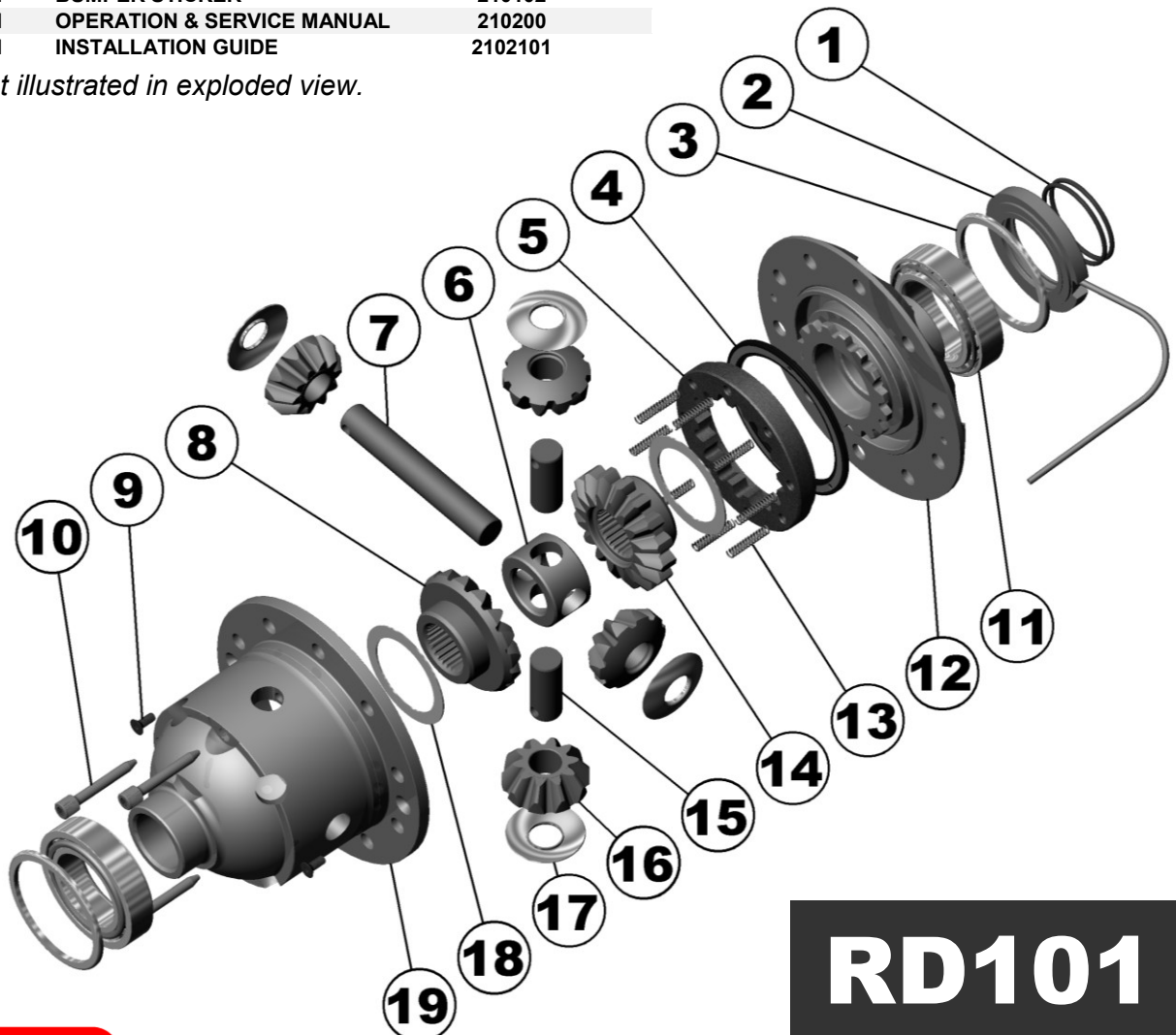
ITEM #	QTY	DESCRIPTION	PART #	NOTES
1	2	SEAL HOUSING O-RING	160235	1
2	1	SEAL HOUSING ASSEMBLY	081801	
3	2	SHIM KIT	SHK003	
*	2	MASTER SHIM	150325	
4	1	BONDED SEAL	160701	
5	1	CLUTCH GEAR	050803	
6	1	SPIDER BLOCK	070503	
7	1	LONG CROSS SHAFT	061302	
8	1	SIDE GEAR	SEE NOTE	3
9	2	COUNTERSUNK SCREW	200213	
10	3	CROSS SHAFT RETAINING PIN	120601	
11	2	TAPERED ROLLER BEARING	160109	2
12	1	FLANGE CAP ASSEMBLY	028502	
13	8	RETURN SPRING	150107	
14	1	SPLINED SIDE GEAR	SEE NOTE	3
15	2	SHORT CROSS SHAFT	061402	
16	4	PINION GEAR	SEE NOTE	3
17	4	PINION THRUST WASHER	151112	
18	2	SIDE GEAR THRUST WASHER	151011	
19	1	DIFFERENTIAL CASE	013103	
*	1	BULKHEAD FITTING KIT (O-RING TYPE)	170111	
*	1	PUSH-IN FITTING (5mm to 1/8" BSPP)	170201	
*	1	AIR LINE (5mm DIA X 6m LONG)	170301	
*	1	NIPPLE (1/8" to 1/8" BSPT)	170501	
*	1	SOLENOID VALVE (12V)	180103	
*	1	SWITCH	180209	
*	1	SWITCH COVER (FRONT)	180210	
*	10	CABLE TIE	180301	
*	1	WARNING LABEL	210101	
*	1	BUMPER STICKER	210102	
*	1	OPERATION & SERVICE MANUAL	210200	
*	1	INSTALLATION GUIDE	2102101	

Notes:

- For replacement O-rings use only BS133 Viton 75.
- For replacement bearing use Timken part # LM102949 / LM102910.
- Available only as complete 6 gear set # 728J011
- Bearing cap torque does not apply to aluminum housings. Refer to vehicle's service manual for correct torque value.

For ratios of 3.73:1 and up refer to RD100 (Section 2.100).

* Not illustrated in exploded view.



RD101

