

ARB AIR LOCKER *Air Operated Locking Differentials*

RD105 Dana 35,30 SPL,3.54 & UP

Specs:

Axle Spline	30 tooth, Ø33.3mm [1.31"]
Ratio Supported	3.54:1 & up
Ring Gear ID	120.7mm [4.75"]
Ring Gear OD	193mm [7.6"]
Ring Gear Bolts	8 bolts on Ø146mm [5.75"]
Ring Gear Torque	75Nm [55 ft-lb]
Backlash	0.15-0.25mm [0.006-0.010"]
Bearing Cap Torque	75Nm [55 ft-lb]

Notes:

- 1 For replacement O-rings use only BS133 Viton 75.
- 2 For replacement bearing use Timken part # LM102949 / LM102910.
- 3 Available only as complete 5 gear set #728J031C

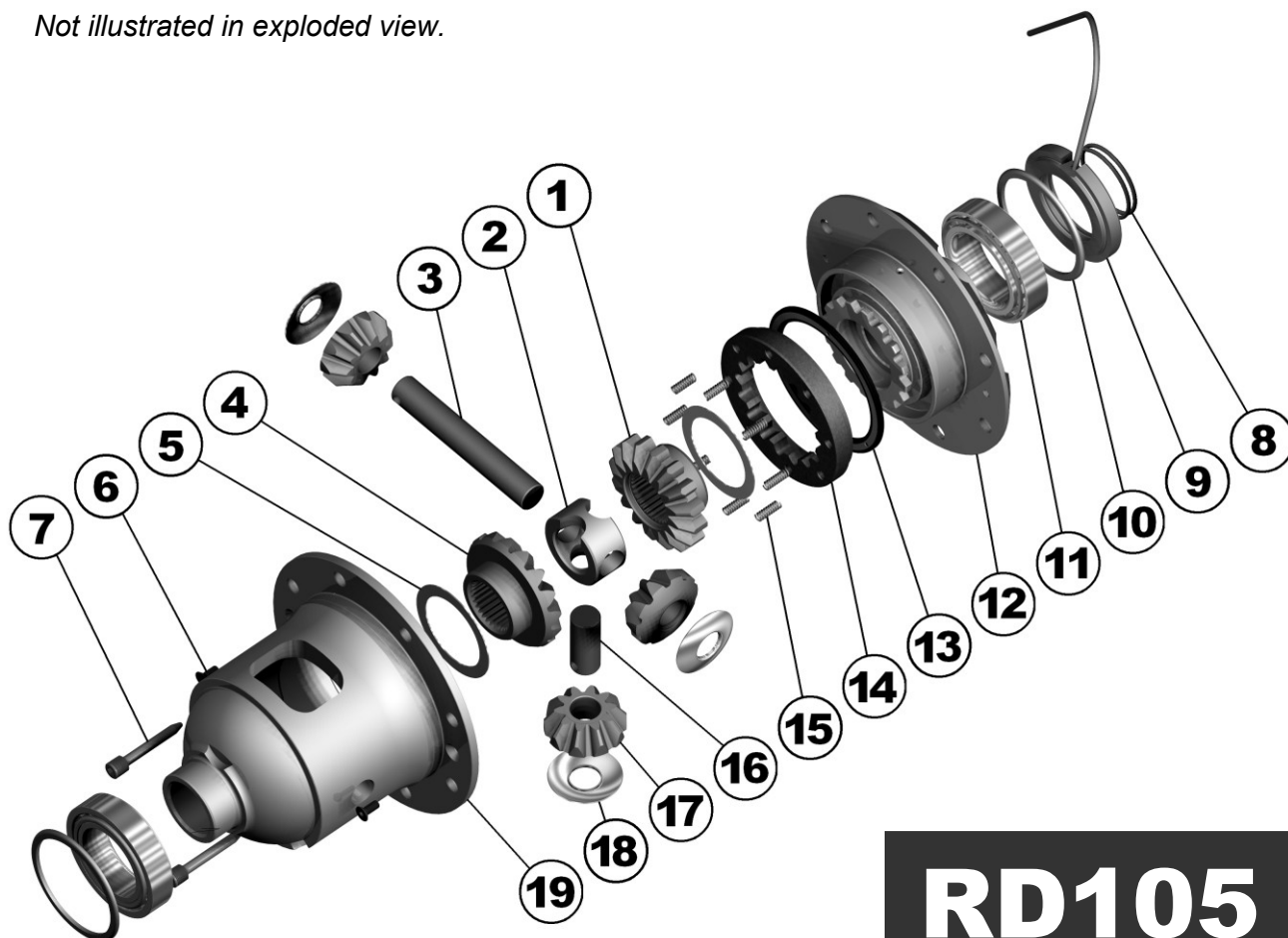
Newer OEM Dana 35 ring and pinion sets use 7/16" bolts. The flange holes of the Air Locker must be reamed from Ø3/8" to Ø7/16" to suit.

Some OEM Dana 35 drive pinion gears extend too far into the centre and converge with the differential carrier. Refer to ring and pinion modification note ([Section 5.6](#)) for correction.

30 spline Dana 35 is a performance upgrade requiring aftermarket axle shafts.

ITEM #	QTY	DESCRIPTION	PART #	NOTES
01	1	SPLINED SIDE GEAR	SEE NOTE	3
02	1	SPIDER BLOCK	070801	
03	1	LONG CROSS SHAFT	061302	
04	1	SIDE GEAR	SEE NOTE	3
05	2	SIDE GEAR THRUST WASHER	151011	
06	2	COUNTERSUNK SCREW	200213	
07	2	CROSS SHAFT RETAINING PIN	120601	
08	2	SEAL HOUSING O-RING	160235	1
09	1	SEAL HOUSING ASSEMBLY	081801	
10	2	SHIM KIT	SHK003	
*	2	MASTER SHIM	150325	
11	2	TAPERED ROLLER BEARING	160109	2
12	1	FLANGE CAP ASSEMBLY	028504	
13	1	BONDED SEAL	160701	
14	1	CLUTCH GEAR	050803	
15	8	RETURN SPRING	150107	
16	1	SHORT CROSS SHAFT	061402	
17	3	PINION GEAR	SEE NOTE	3
18	3	PINION THRUST WASHER	151112	
19	1	DIFFERENTIAL CASE	013104	
*	1	BULKHEAD FITTING KIT (O-RING TYPE)	170111	
*	1	PUSH-IN FITTING (5mm to 1/8" BSPP)	170201	
*	1	AIR LINE (5mm DIA X 6m LONG)	170301	
*	1	NIPPLE (1/8" to 1/8" BSPT)	170501	
*	1	SOLENOID VALVE (12V)	180103	
*	1	SWITCH	180209	
*	1	SWITCH COVER (REAR)	180211	
*	10	CABLE TIE	180301	
*	1	WARNING LABEL	210101	
*	1	BUMPER STICKER	210102	
*	1	OPERATION & SERVICE MANUAL	210200	
*	1	INSTALLATION GUIDE	2102105	

* Not illustrated in exploded view.



RD105

