

# ARB AIR LOCKER *Air Operated Locking Differentials*

## RD117 Dana 44,30 SPL,3.73 & DN

### Specs:

|                    |                            |
|--------------------|----------------------------|
| Axle Spline        | 30 tooth, Ø33.3mm [1.31"]  |
| Ratio Supported    | 3.73:1 & down              |
| Ring Gear ID       | 141.3mm [5.56"]            |
| Ring Gear OD       | 216mm [8.5"]               |
| Ring Gear Bolts    | 10 bolts on Ø168mm [6.61"] |
| Ring Gear Torque   | 75Nm [55 ft-lb]            |
| Backlash           | 0.15-0.25mm [0.006-0.010"] |
| Bearing Cap Torque | 81Nm [60 ft-lb]            |

| ITEM # | QTY | DESCRIPTION                        | PART #   | NOTES |
|--------|-----|------------------------------------|----------|-------|
| 1      | 2   | SEAL HOUSING O-RING                | 160207   | 1     |
| 2      | 1   | SEAL HOUSING ASSEMBLY              | 081803   |       |
| 3      | 2   | SHIM KIT                           | SHK009   |       |
| *      | 2   | MASTER SHIMS                       | 150352   |       |
| 4      | 1   | BONDED SEAL                        | 160703   |       |
| 5      | 1   | CLUTCH GEAR                        | 050804   |       |
| 6      | 1   | SPIDER BLOCK                       | 070201   |       |
| 7      | 1   | LONG CROSS SHAFT                   | 060204   |       |
| 8      | 1   | SIDE GEAR                          | SEE NOTE | 3     |
| 9      | 2   | COUNTERSUNK SCREW                  | 200213   |       |
| 10     | 3   | CROSS SHAFT RETAINING PIN          | 120601   |       |
| 11     | 2   | TAPERED ROLLER BEARING             | 160101   | 2     |
| 12     | 1   | FLANGE CAP ASSEMBLY                | 027305   |       |
| 13     | 12  | RETURN SPRING                      | 150113   |       |
| 14     | 1   | SPLINED SIDE GEAR                  | SEE NOTE | 3     |
| 15     | 2   | SHORT CROSS SHAFT                  | 060403   |       |
| 16     | 4   | PINION GEAR                        | SEE NOTE | 3     |
| 17     | 4   | PINION THRUST WASHER               | 151110   |       |
| 18     | 2   | SIDE GEAR THRUST WASHER            | 151010   |       |
| 19     | 1   | DIFFERENTIAL CASE                  | 013005   |       |
| *      | 1   | BULKHEAD FITTING KIT (O-RING TYPE) | 170111   |       |
| *      | 1   | PUSH-IN FITTING (5mm to 1/8" BSPP) | 170201   |       |
| *      | 1   | AIR LINE (5mm DIA X 6m LONG)       | 170301   |       |
| *      | 1   | NIPPLE (1/8" to 1/8" BSPT)         | 170501   |       |
| *      | 1   | SOLENOID VALVE (12V)               | 180103   |       |
| *      | 1   | SWITCH                             | 180209   |       |
| *      | 1   | SWITCH COVER (FRONT)               | 180210   |       |
| *      | 1   | SWITCH COVER (REAR)                | 180211   |       |
| *      | 10  | CABLE TIE                          | 180301   |       |
| *      | 1   | WARNING LABEL                      | 210101   |       |
| *      | 1   | BUMPER STICKER                     | 210102   |       |
| *      | 1   | OPERATION & SERVICE MANUAL         | 210200   |       |
| *      | 1   | INSTALLATION GUIDE                 | 2102117  |       |

### Notes:

- For replacement O-rings use only BS136 Viton 75.
- For replacement bearing use Timken part # LM104949 / LM104912.
- Available only as complete 6 gear set # 728H081

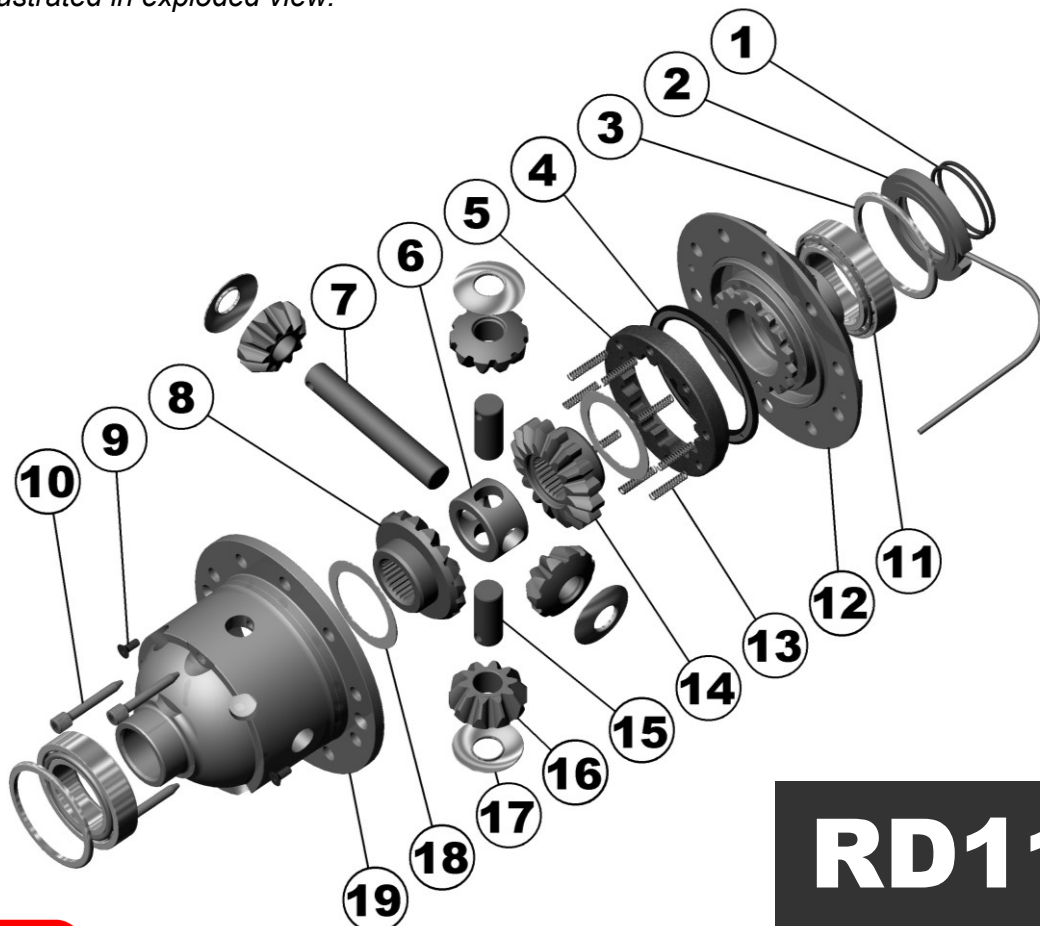
For Ford IFS installation refer to tech note ([Section 5.12](#)) for alternative to C-clip use.

For ratios of 3.92:1 and up refer to RD116 ([Section 2.116](#))

Suitable for use with ABS tone ring.

Newer OEM Dana 44 ring and pinion sets may use 3/8", 7/16" or 1/2" bolts. The flange holes of the Air Locker may need to be drilled or reamed from Ø3/8" to Ø7/16" or Ø1/2" to suit.

\* Not illustrated in exploded view.



# RD117

