



RHINO-RACK

PLHSPAIR - Pioneer Leg Height Spacer

Place these instructions in the vehicle's glove box after installation is complete.

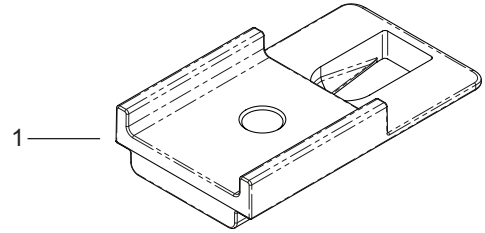
Important: Please read these instructions carefully prior to installation.
Please refer to your fitting instruction to ensure that the alloy tray is installed correctly.
Check the contents of this kit before commencing fitment and report any discrepancies.

Item	Component Name	Qty	Part No.
1	Pioneer Leg Height Spacer	2	M609
2	Fitting Instructions	1	R213

Care Instruction

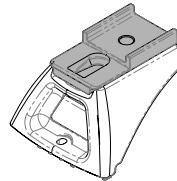
Clean alloy tray prior to fitting the Pioneer leg height spacers.

Tools Required 16mm Spanner

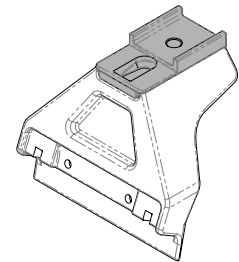


1 Replace Leg Bolts

Replace bolts in Rhino leg kits with the bolts supplied in the alloy tray hardware kit. Select the appropriate bolt length as shown below.



RLCP Leg with Spacer
M10 x 35mm Hex Bolt

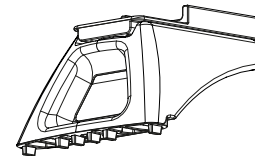
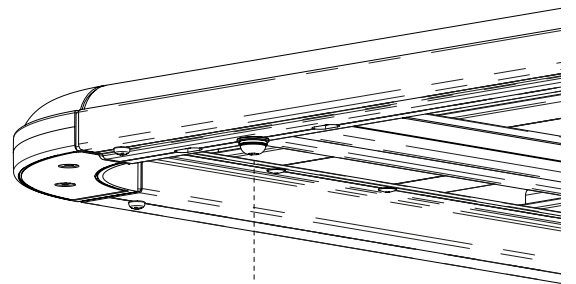


RL Leg with Spacer
M10 x 40mm Hex Bolt



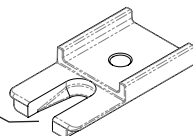
2 Fit legs to tray

Fit the leg to the tray as specified in the fitting instruction. Make sure the head of the M8 dome bolt sits within the leg height spacer as shown.



Note:

The end of the leg height spacer can be cut away with a hacksaw if required.



Rhino-Rack
3 Pike Street, Rydalmere,
NSW 2116, Australia.
(Ph) (02) 9638 4744
(Fax) (02) 9638 4822

Document No: R213
Prepared By: Nigel Greig
Authorised By: Chris Murty

Issue No: 01
Issue Date: 14/06/2012

These instructions remain the property of Rhinorack Australia Pty Ltd and may not be used or changed for any other purpose than intended.