



OMIX-ADA, Inc.



## Side Window Air/Rain Deflectors

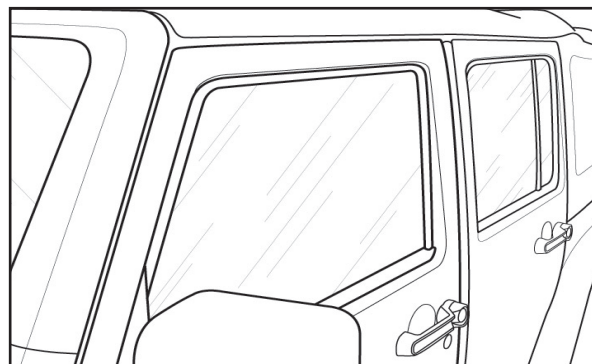
Note: Application and product may vary from illustrations. Caution: Before driving, ensure that all deflectors are secured properly.

Please read all instructions before installation of Wind/Rain Deflectors

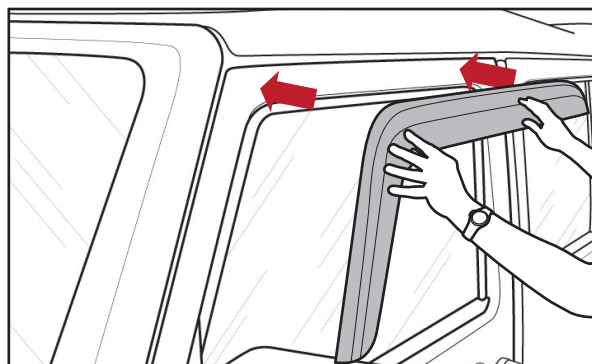
### Preparations Before Installation

- Check and determine if Wind/Rain Deflectors are the correct fit for your vehicle.
- Wash and Clean all mounting surfaces of the vehicle using Isopropyl Alcohol (Rubbing Alcohol).
- To ensure proper bond apply only when temperatures of mounting surfaces is between 65-110°F.
- Be sure all mounting surfaces are dry before installation

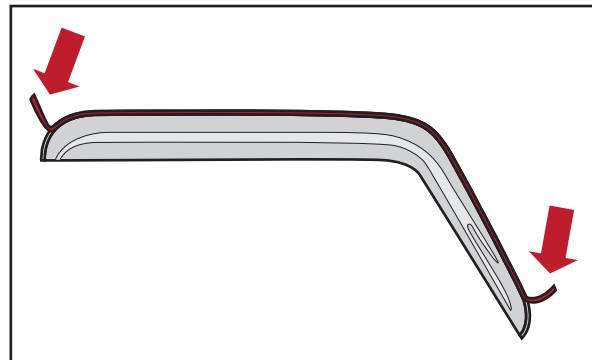
1. Clean the painted surface where the deflector will be attached using Isopropyl Alcohol (Rubbing Alcohol).



2. Hold and position deflector to determine mounting position.

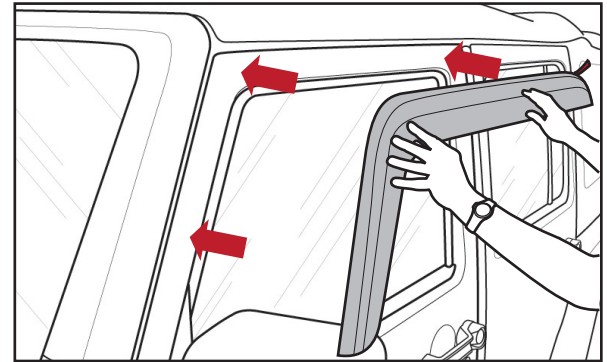


3. Remove 2" of tape liner from each end of the deflector.

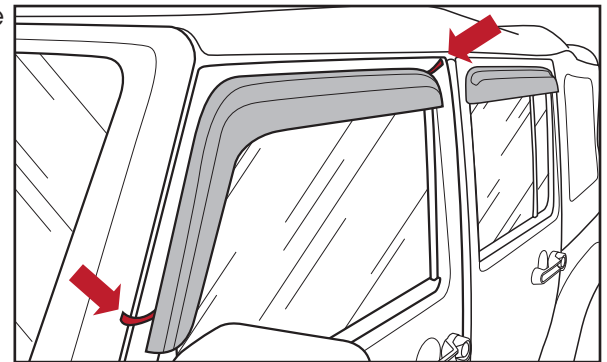


## Side Window Air/Rain Deflectors

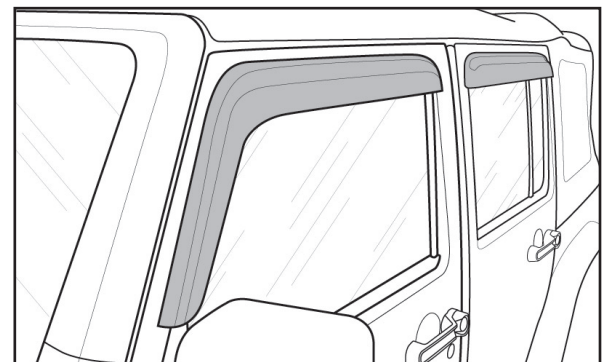
4. Place the deflector in a desired location on the door.



5. Once the deflector is positioned, carefully pull and remove the tape liner. Apply firm pressure along mounting surfaces to secure.



6. Apply same methods to the rear deflectors (if applicable).



### Safety Information

- CAUTION - Before driving, check and ensure that all deflectors are properly mounted and secured to vehicle.
- Periodically check and ensure that all deflectors are properly mounted and secure to vehicle.