

AXLE RATIO

Programming axle ratio is only required after physically changing the gears in the differentials. There is no performance increase by adjusting this value to anything besides what the vehicle has physically installed. Programming the incorrect ratio will cause some vehicles to go into "Limp-In" mode.

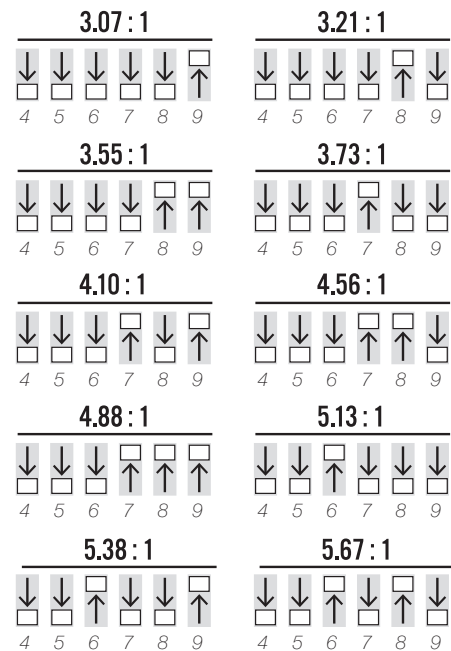
1

Set DIP switches 1-3 as shown.



2

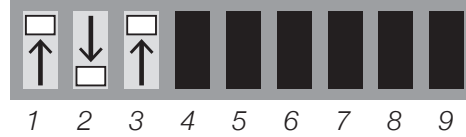
Set switches 4-9 using the chart below for the axle ratio physically installed in the vehicle.



OPTIONS

1

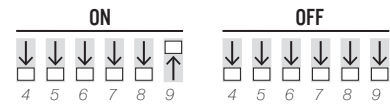
Set DIP switches 1-3 as shown.



2a

ONE-TOUCH LANE CHANGE

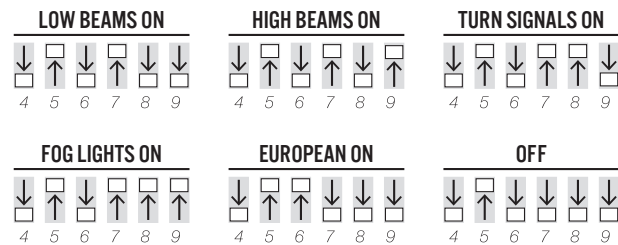
Set switches 4-9 using the chart below.



2b

DAYTIME RUNNING LAMPS

Set switches 4-9 using the chart below.

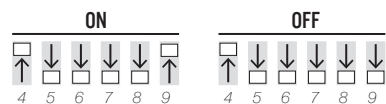


By design, the Daytime Running Lamps will only function with the E-Brake in the OFF position and the vehicle in gear (auto trans only). To verify the function is correct and desired mode is set, pull the vehicle up to a reflective surface or have a by-stander verify function. Please take caution to keep the vehicle under control at all times.

2c

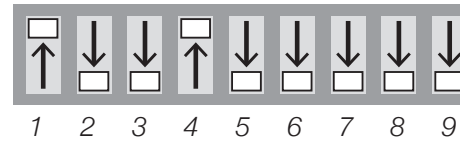
AUTO SWAY BAR SYSTEM

Set switches 4-9 using the chart below.



CLEAR DTC CODES

1

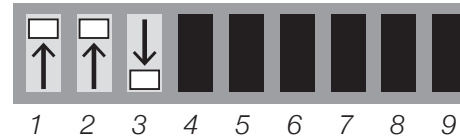


RUNTIME FUNCTIONS

Runtime functions do not program any values and require the ProCal to remain plugged in during their use.

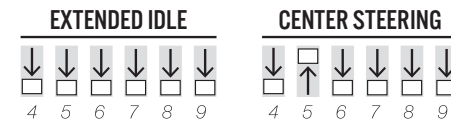
1

Set DIP switches 1-3 as shown.



2

Set switches 4-9 using the chart below.



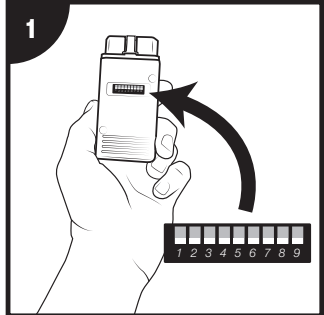
*The engine must be running with the E-brake engaged before inserting the ProCal. Use the dimmer switch to adjust idle set point.



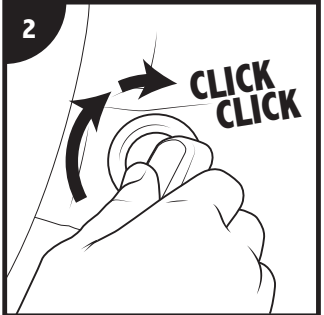
PROCAL MODULE

QUICK REFERENCE GUIDE

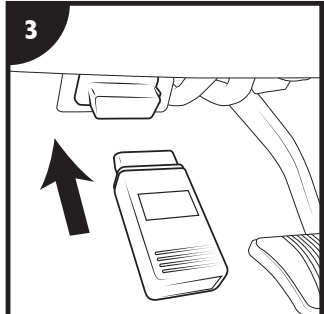
INSTRUCTIONS



Set the DIP switches on the back of the ProCal using this Quick Reference Guide for the function you wish to program.



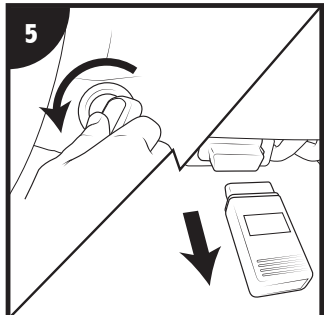
Insert the key into the ignition and turn TWO clicks to put the vehicle in the "run" position.



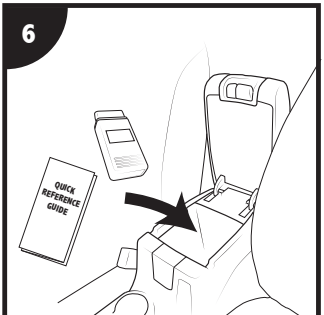
Insert the ProCal into your vehicle's OBD port.



The vehicle's horn will sound twice when the program has been successful.

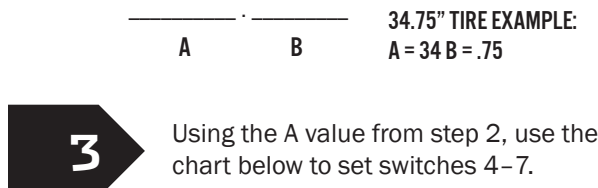
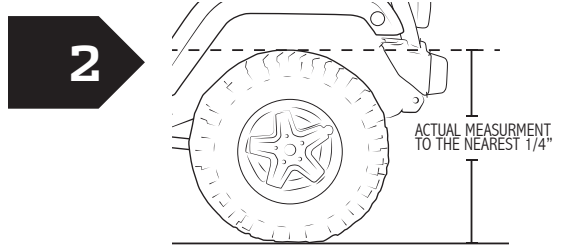
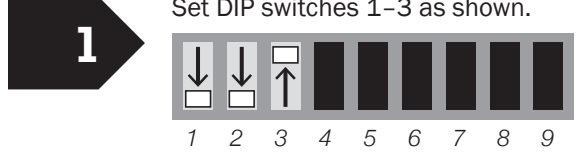


Turn the key to the "off" position then remove the ProCal from the OBD port.



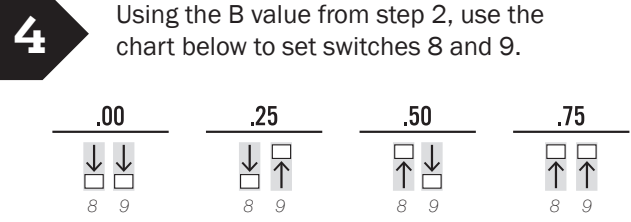
Just toss your ProCal and QRG into your center console or glove box for next time!

TIRE SIZE

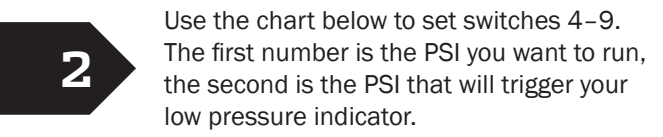
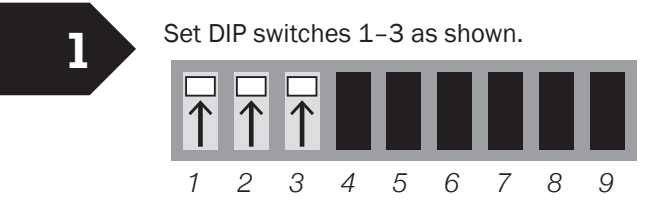


24	25	26	27
↓ ↓ ↓ ↓	↓ ↓ ↓ ↑	↓ ↓ ↑ ↓	↓ ↓ ↑ ↑
4 5 6 7	4 5 6 7	4 5 6 7	4 5 6 7
28	29	30	31
↓ ↑ ↓ ↓	↓ ↑ ↓ ↑	↓ ↑ ↑ ↓	↓ ↑ ↑ ↑
4 5 6 7	4 5 6 7	4 5 6 7	4 5 6 7
32	33	34	35
↑ ↓ ↓ ↓	↑ ↓ ↓ ↑	↑ ↓ ↑ ↓	↑ ↓ ↑ ↑
4 5 6 7	4 5 6 7	4 5 6 7	4 5 6 7
36	37	38	
↑ ↑ ↓ ↓	↑ ↑ ↓ ↑	↑ ↑ ↑ ↓	
4 5 6 7	4 5 6 7	4 5 6 7	

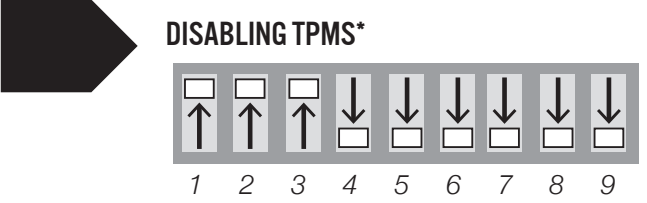
For Tire Sizes larger than 38.75" see the full Instruction Manual included with your ProCal.



LOW TIRE PRESSURE THRESHOLD



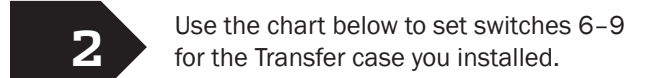
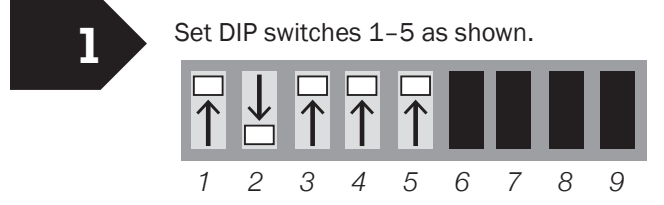
28/22 PSI	29/23 PSI	30/24 PSI
↓ ↑ ↓ ↑	↓ ↑ ↓ ↑	↓ ↑ ↓ ↓
4 5 6 7 8 9	4 5 6 7 8 9	4 5 6 7 8 9
31/25 PSI	33/26 PSI	34/27 PSI
↓ ↑ ↑ ↓	↓ ↑ ↑ ↓	↓ ↑ ↑ ↓
4 5 6 7 8 9	4 5 6 7 8 9	4 5 6 7 8 9
35/28 PSI	36/29 PSI	
↓ ↑ ↑ ↑	↓ ↑ ↑ ↓	
4 5 6 7 8 9	4 5 6 7 8 9	



* Setting the TPMS to a disabled value is for diagnostic purposes only, see User Guide for details. This option may be restricted in some areas.

TRANSFER CASE

NOTE: The Transfer Case setting can NOT be used alone. It must be combined with either an axle change or a tire change with the ProCal. Program the Transfer Case setting BEFORE tire or axle programming. If you have previously programmed either an axle or tire change, you will have to re-program those after programming the Transfer Case change.



1:1 TCASE	ATLAS 2:1	SPORT/SAHARA 2.72:1	ATLAS 3:1
↓ ↑ ↓ ↓	↓ ↑ ↓ ↑	↓ ↑ ↑ ↓	↓ ↑ ↑ ↑
6 7 8 9	6 7 8 9	6 7 8 9	6 7 8 9
ATLAS 3.8:1	RUBICON 4:1	ATLAS 4.3:1	ATLAS 5:1
↑ ↓ ↓ ↓	↑ ↓ ↓ ↑	↑ ↓ ↑ ↓	↑ ↓ ↑ ↑
6 7 8 9	6 7 8 9	6 7 8 9	6 7 8 9