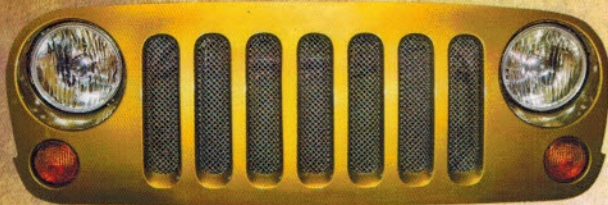




2007-2014 JEEP JK MESH GRILLE INSTALLATION INSTRUCTIONS

PART NO: JP-190010-BK & JP-190010-C



Thank you for purchasing a quality Drake Off Road product. Please refer to the installation instructions below when installing this product.

SHOWN: JP-190010-C

TOOLS REQUIRED:

- Straight slot screwdriver or body clip removal tool

INSTALLATION:

Remove stock handle:

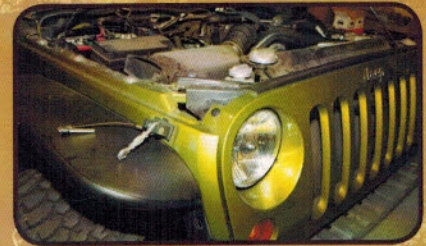
1. Using straight slot screwdriver or body tool, pop inner portion of the 6 clips holding factory grille to top of core support upwards.
2. Using straight slot screwdriver or body clip removal tool pry the 6 clips upwards and fully remove.
3. Pull top portion of factory grille outwards.
4. Along bottom surface of grille there are 4 clips that secure it to the core support. Use caution to not break them while pulling or gently hitting the grille forward with hand to pop the clips loose. Be careful not to over extend wires running to turn signal lights.
5. Slide tab on Drake Mesh Grille with rubber grommet over the lower center pin of the OE grille. Make sure top mounting bracket of Drake Mesh Grille somewhat lines up with top surface of OE grille.
6. Once all lined up carefully line up lower portion of OE grille so that the 4 clips are lined up and gently push on the front lower portion of the grille to pop the clips back into place. *You should hear them actually clip into place.* It may be necessary to gently hit the bottom area of the grille inwards to get the clips to pop into place.
7. Line up top holes and install 6 plastic push pins removed in earlier steps. Take care installing center 4 clips. Extra force pushing downwards on the grille and the clips may be needed.

SATISFACTION GUARANTEE:

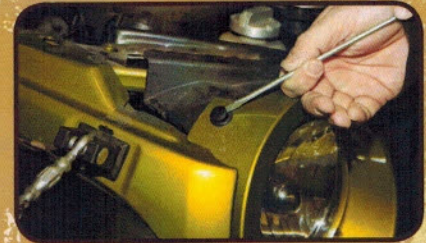
If you are not happy with this product, for any reason, or found product to be defective in manufacturing, simply return it to Drake Off Road within 30 days of purchase and we will replace it - no questions asked. We stand behind our products one hundred percent, so you can sit behind the wheel with pride.

**Proof of purchase and dated receipt must be present with any return. All returned products are tested and if found to be damaged by the installer, no replacement will be issued. You pay the the cost to ship to us, we pay for the return shipping. Guarantee does not include any labor and/or tax charges incurred.*

INSTALLING THE MESH GRILLE



Step 1



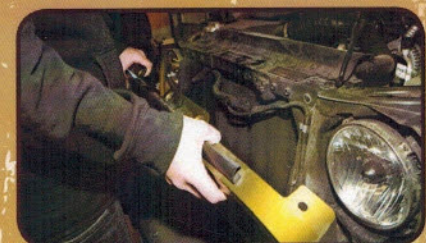
Step 2



Step 3



Steps 4 & 5



Step 6



Step 7