



WARNING:

This product can expose you to chemicals including vinyl chloride and lead, which is known to the state of California to cause cancer and birth defects or other reproductive harm. For more information go to www.P65Warnings.ca.gov

CFE PRODUCTS

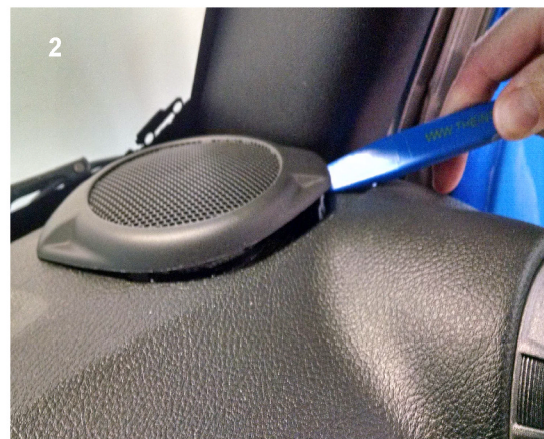
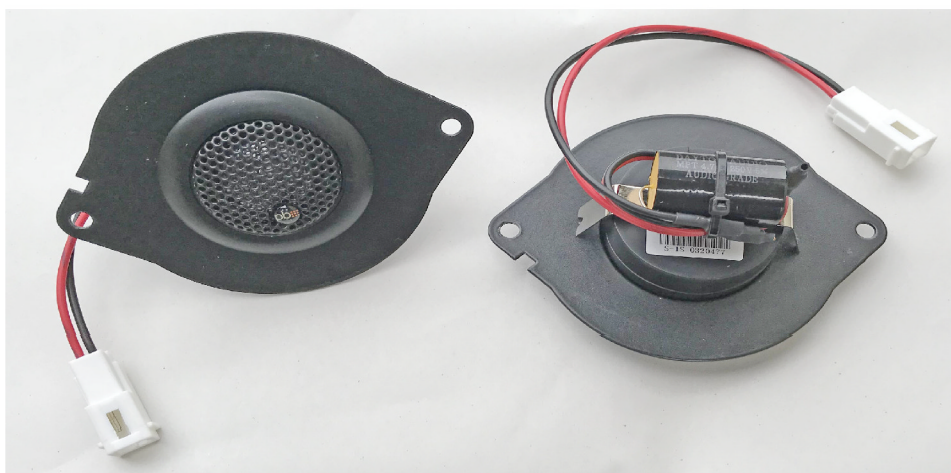
REV 2018

P65

JL CUSTOM TWEETER UPGRADE KIT

MODEL #JL - TWEET

JL Dash & Soundbar

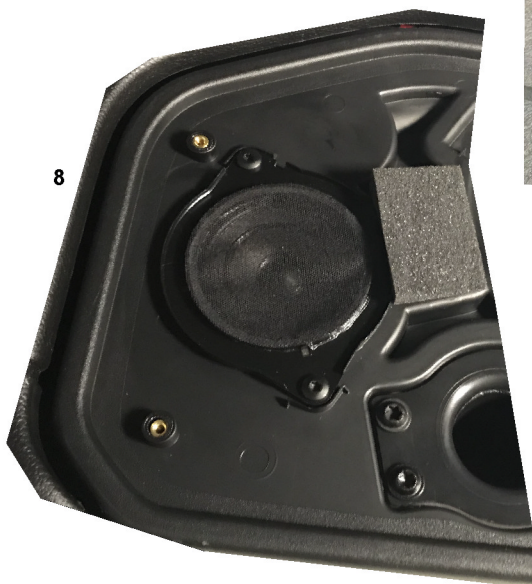
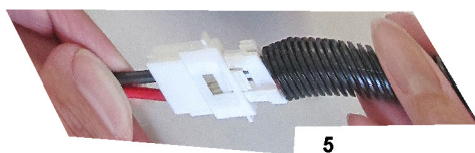
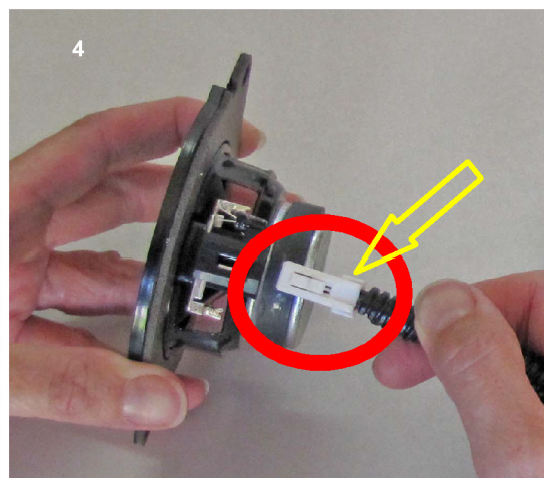


INSTALLATION INSTRUCTIONS

(pictures shown are for a JK
procedures for JL are the same)

Dash:

1. Using a Flat Edge or Trim Stick gently remove the Tweeter Cover as shown in fig. 2.
2. Remove the Screws that secure the Factory Tweeter. Pay attention to the Key-Way location on the Tweeter Frame as shown by the White Circle in fig. 3. The New Tweeter Frame has a Key-Way which will be aligned in the same position as shown in fig. 3.
3. Press down on the Tab to unplug the Factory Connector as shown by the Yellow Arrow in fig. 4.
4. Plug the White Connector from the Jeep into the White Connector on the New Tweeter as shown in fig. 5.
6. Install the New Tweeter as shown in fig. 6 paying attention to the Key-Way.
7. Reinstall Screws and Cover.
8. Follow the same procedure for both sides.



Soundbar:

1. Remove the 4 Screws holding the Grill on the Soundbar as shown in fig. 7.
2. Remove the 2 Screws holding the Soundbar Tweeter in as shown in fig. 8.
3. Repeats steps 3 - 6 above to install the Soundbar Tweeters.

Questions or comments call
CFE Products and ask for Bob.
610-358-1886.