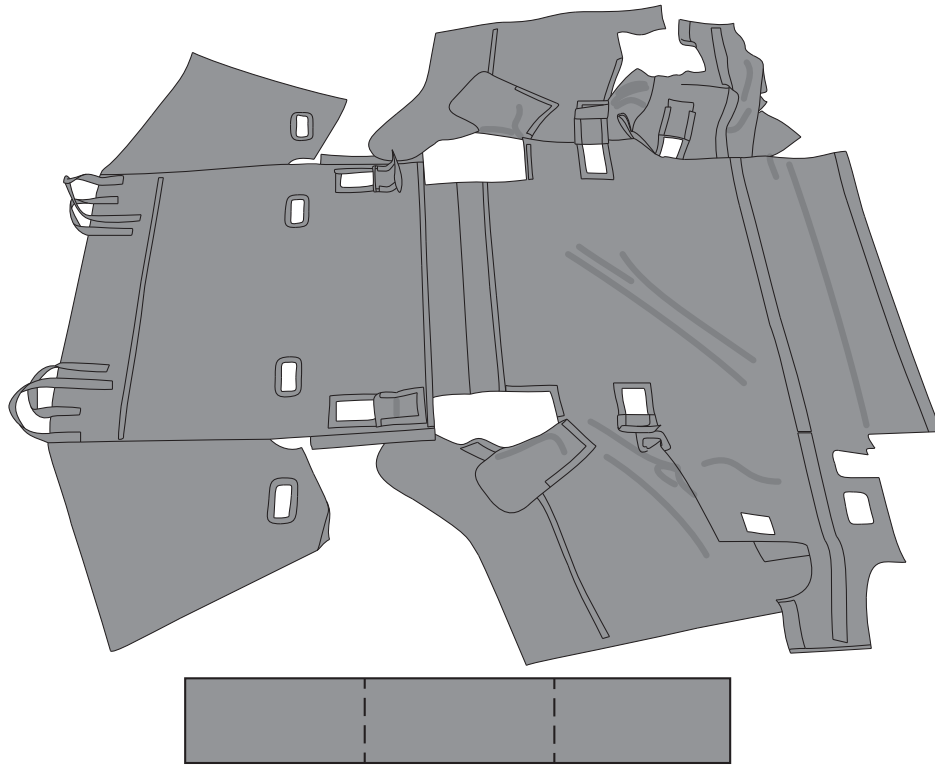




460 HORIZON DR. SUITE 100 | SUWANEE, GA 30024 | PHONE: 770-614-6101 | FAX: 770-614-6069 | info@omix-ada.com

Part #13260.14

2-Door C3 Configurable Cargo Cover



Components

- 1. Cargo Cover (1)
- 2. Hook and Loop Strip (2)
- 3. Adhesive Promoter (1)

Required Tools

- 1. Scissors
- 2. Isopropyl Alcohol
- 3. Brush or Swab
- 4. Plastic Putty Knife

ATTN: STATE OF CALIFORNIA CONSUMERS
⚠ WARNING: Cancer and Reproductive Harm - www.P65Warnings.ca.gov.

OMIX-ADA® TECHNICAL SUPPORT
PHONE: M-F 8am - 5pm EST 1-800-449-6649 | **TICKET:** www.omixsupport.com
FOR WARRANTY INFORMATION VISIT: www.Omix-Ada.com



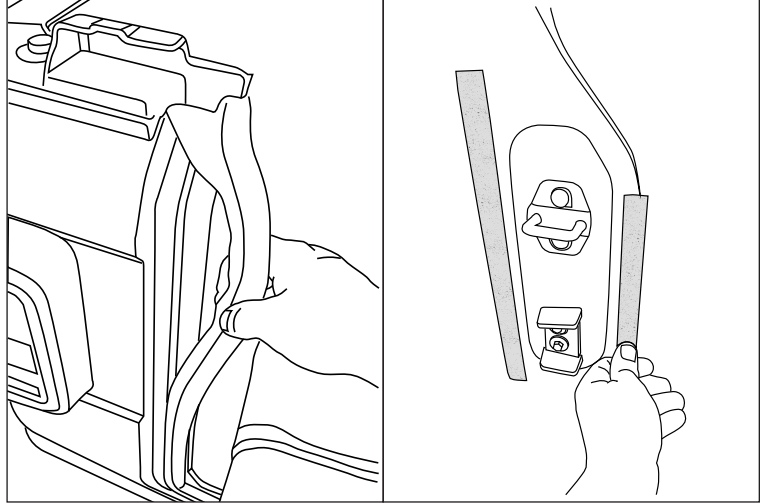
460 HORIZON DR. SUITE 100 | SUWANEE, GA 30024 | PHONE: 770-614-6101 | FAX: 770-614-6069 | info@omix-ada.com

2-Door C3 Configurable Cargo Cover

1. Open tailgate, pull weather strip away from left and right side.

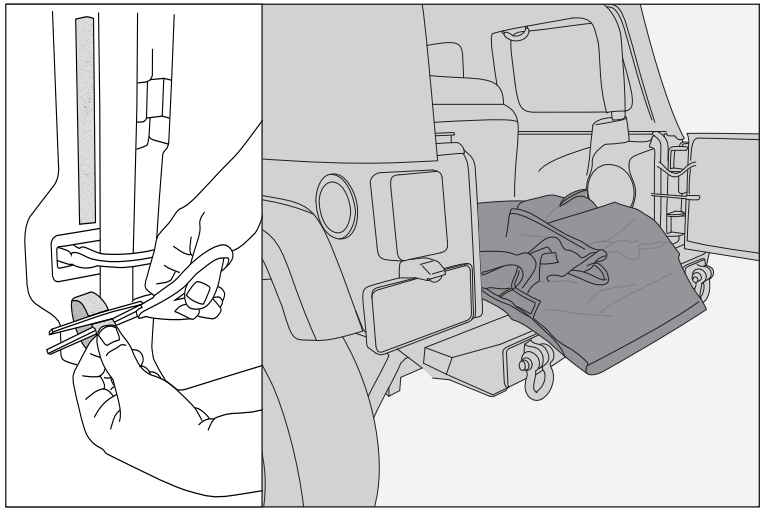
NOTICE For steps 2 & 3. Clean area thoroughly with isopropyl alcohol. Apply promoter with brush or cotton swab. Allow 60 seconds for promoter to dry before applying Hook and Loop Strip.

2. Place long Hook and Loop Strip to left hand rear tailgate trim. Cut to length if needed.

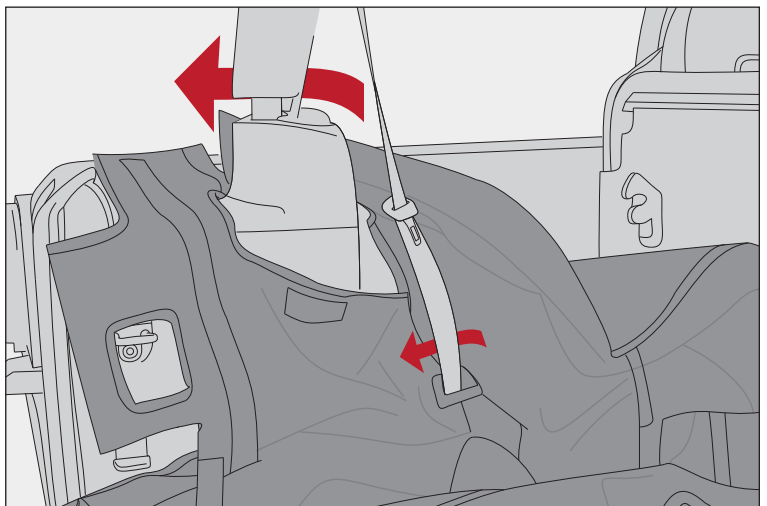


3. Place Hook and Loop Strip to right hand tailgate trim. Cut to split between tailgate stop arm.

4. Fold and tumble rear seat and place Cargo Cover into vehicle. Fabric side facing up. Ensure C3 Logo is on Driver (Left) Side of vehicle. Tailgate flap will hang over rear bumper.



5. Attach hook and loop strips around base of rollbar and seatbelt.

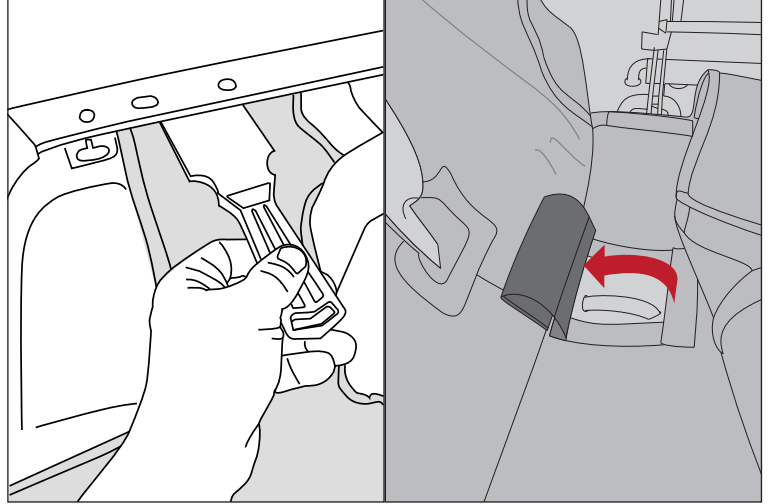




460 HORIZON DR. SUITE 100 | SUWANEE, GA 30024 | PHONE: 770-614-6101 | FAX: 770-614-6069 | info@omix-ada.com

2-Door C3 Configurable Cargo Cover

6. Using a plastic putty knife, insert edges of Cargo Cover between carpet and underside of body tub. Allow front section to rest over wheel well and around seat belt.



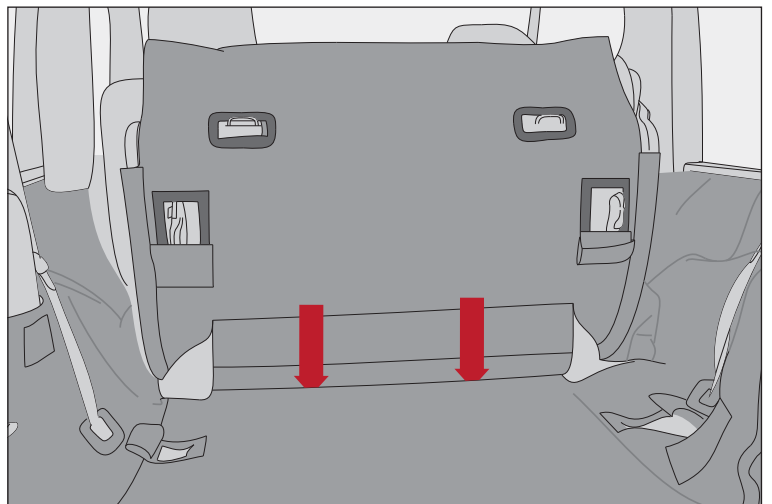
7. Release fabric flaps from footman loops near seatbelt on both sides.

For use with seats in riding position:

8. Align openings in large flaps near tailgate with openings on base of Cargo Cover and secure with hook and loop strips.



9. Ensure all footman cut outs are aligned and open and fabric is pushed into crease at base of seat. Lower seats to riding position.





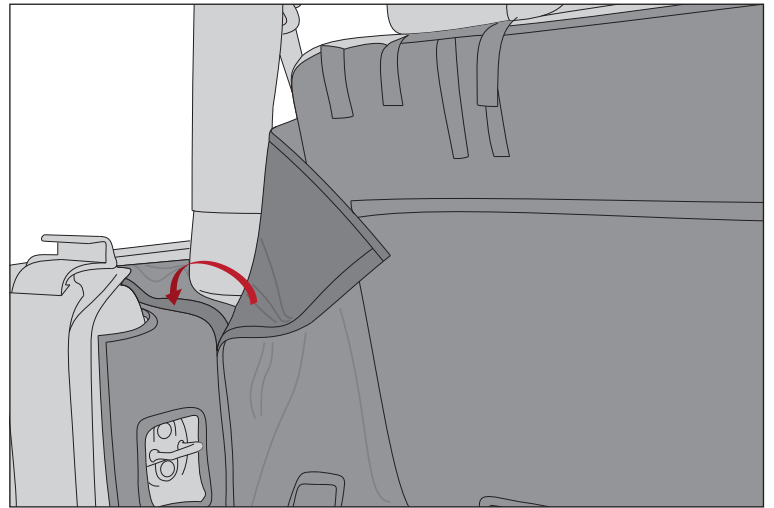
460 HORIZON DR. SUITE 100 | SUWANEE, GA 30024 | PHONE: 770-614-6101 | FAX: 770-614-6069 | info@omix-ada.com

2-Door C3 Configurable Cargo Cover

10. Raise fabric to meet headrests and loop shorter hook and loop straps around to secure. Longer strap may be tucked and secured behind fabric.

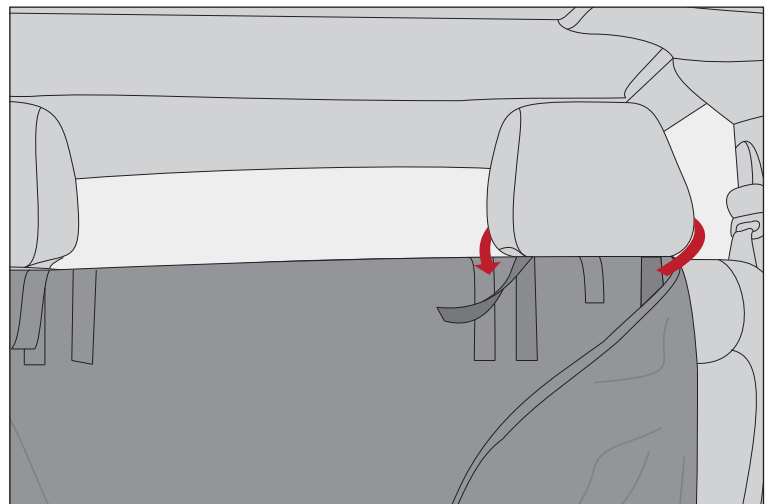


11. For more coverage, attach flaps on sides of seats, folded and secured in step 8, to hook and loops strips near rollcage.



For use with seats removed:

12. Raise Cargo Cover to meet front seat headrests. Wrap longer hook and loops straps around headrests and secure.

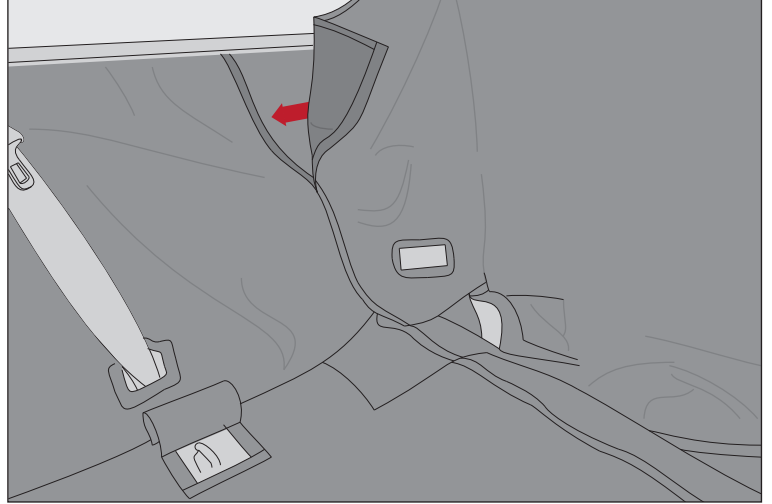




460 HORIZON DR. SUITE 100 | SUWANEE, GA 30024 | PHONE: 770-614-6101 | FAX: 770-614-6069 | info@omix-ada.com

2-Door C3 Configurable Cargo Cover

- 13. Secure flaps over all footman loops.
- 14. Push excess fabric into crease behind seats.
- 15. Secure side flaps to hook and loop strip on wheel well.



- 16. Secure bottom corner flaps to corresponding hook and loop strips.

