



MADE IN THE USA

INSTALLATION MANUAL

TAILGATE TABLE

AC-TB-200

| Description | Quantity |
|-----------------------------------|----------|
| Tailgate Table (Assembled) | 1 |
| Self Taping Screws (JK MODEL) | 6 |
| M6 x 40 mm Button Head (JL MODEL) | 3 |
| Spacers (JL MODEL) | 3 |
| Oil Resistant O Rings (JL MODEL) | 6 |

| Tools Required | |
|--|--------------------------------|
| Phillips Screwdriver (JK MODEL) | 4mm Hex Head Driver (JL MODEL) |
| *Optional* | |
| Impact Gun with Phillips Head for JK Install | |



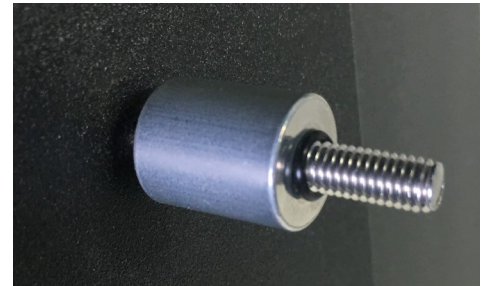
JL TAILGATE INSTALL INSTRUCTIONS (FOR JK, SEE PAGE 3)

Remove the cover off the screw mounts on the rear tailgate by popping it off on one end and working down each side.



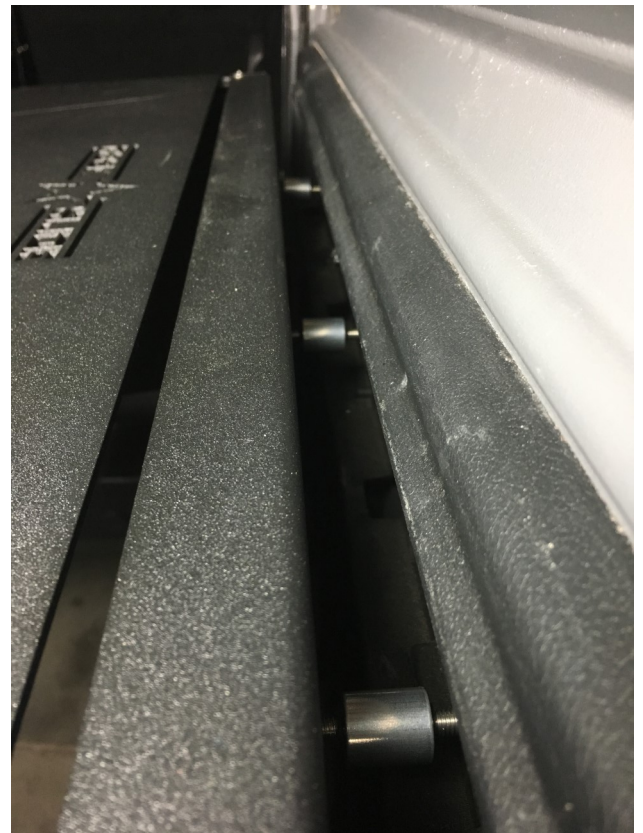
Step 2

On the Tailgate table for the JL, Open the tailgate table and utilize the 3 larger holes and run a bolt through each one of them. On the backside of the bolt, install a o-rings onto the bolt, then the spacer, and then another o-ring. This will hold your spacer in place while you install the table.



Step 3

Line up the bolts with the factory mounts. Install each bolt 2-3 turns so the threads catch in each mount. This may require a 2nd person to hold the tailgate while the first person starts each bolt into the mounts.



Step 4

Once the bolts are started, tighten each bolts in a pattern 4-5 turns at a time and move to the next one. Repeat the process of tightening 4-5 turns then tightening the next one until each bolt is snug against the tailgate. This ensures the washers and spacers do not get stuck.



JK INSTALL INSTRUCTIONS

Open your tailgate and remove the plastic wire cover at the top. This will pop out directly from the tailgate.

Clean the tailgate off to provide a clean mounting surface.



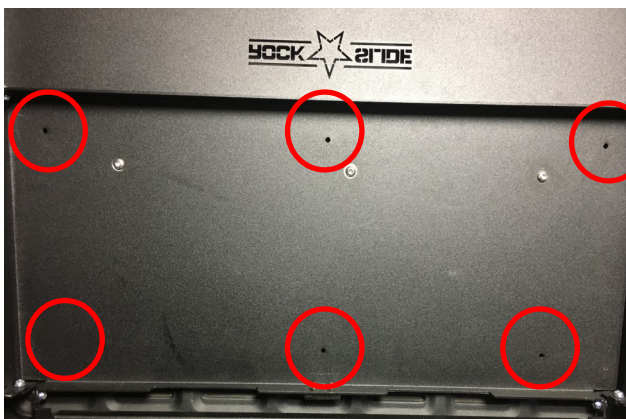
Step 2

Line up the tailgate table in the desired location. The table should cover the wiring.



Step 3

Using the 6 self tapping screws, mount the tailgate in the desired location using a phillips head impact or screwdriver starting with the top corner screws to hold the table in the location, and then install the last 4 screws.



PRODUCT INFORMATION:

LIMITED LIFETIME WARRANTY FOR STRUCTURAL AND MECHANICAL COMPONENTS

LIMITED TWELVE (12) MONTH WARRANTY FOR FINISH AND ELECTRICAL COMPONENTS

Rock-Slide Engineering, LLC (“R-SE”) warrants to the original purchaser that (a) the structural and mechanical components of the Step Sliders will be free of defects in material and workmanship for the lifetime of the Step Sliders (the “product”), and (b) the finish (powder coat) and the electrical components (including the motor) will be free of defects in material and workmanship for a period of twelve (12) months from the original date of purchase. This warranty applies only to the original retail purchaser. Warranty is void if product was not purchased directly from R- SE or from an authorized R-SE retailer or reseller. This warranty applies only with regard to the original installation of the product to the original vehicle. This warranty does not cover removal or reinstallation of the product.

To exercise this warranty and receive any warranty service, the original purchaser must provide R-SE with proof of purchase and date of purchase that is acceptable to R-SE, such as a copy of the original purchaser’s purchase receipt. The original purchaser must return the defective product to R-SE along with a description of the problem, a copy of the original purchase receipt, the original bill of sale and all contact information (name, address, telephone number and email address). To begin the warranty process, the original purchaser must email R-SE’s warranty department.

During this warranty term, and upon the original purchaser’s valid exercise of this warranty, R-SE shall, at its option, repair or furnish a replacement product in the event the original product is deemed by R-SE to be defective. R-SE’s sole liability shall be for repairing or replacing the product, but R-SE may refund the purchase price at its sole discretion and option. The original purchaser is responsible for prepayment of all shipping and/or transportation charges with respect to the exercise of this warranty. The product may change without notice. In the event of a product change, R-SE has no obligation to upgrade or modify any older generation product.

THE WARRANTY SET FORTH HEREIN IS THE ONLY WARRANTY COVERING THE PRODUCT. NO OTHER WARRANTY EXISTS, EXPRESS OR IMPLIED, INCLUDING, WITHOUT LIMITATION, IMPLIED WARRANTIES OF MERCHANTABILITY AND/OR FITNESS FOR A PARTICULAR PURPOSE. No retailer, reseller, dealer, agent or employee is authorized to make any modifications, extensions, amendments or additions to this warranty.

This warranty shall be void in its entirety if R-SE determines that the product installation was modified, changed, altered, customized or in any way used other than as instructed. Installation of the product without strictly adhering to the installation instructions shall void this warranty. Installation must be on the proper vehicle or warranty is void.

R-SE SHALL NOT BE LIABLE FOR SPECIAL, INDIRECT, INCIDENTAL OR CONSEQUENTIAL DAMAGES, UNDER ANY LEGAL THEORY AND/OR UNDER ANY CIRCUMSTANCE WHATSOEVER. IN ANY EVENT, ANY DAMAGES IN ANY SITUATION SHALL BE LIQUIDATED DAMAGES AND MAY NOT EXCEED THE RETAIL PRICE OF THE PRODUCT. R-SE SHALL NOT BE LIABLE FOR ANY LOSS, DAMAGE OR INJURY DIRECTLY OR INDIRECTLY ARISING FROM THE USE OF OR INABILITY TO DETERMINE THE USE OF THE PRODUCT. THE ORIGINAL PURCHASER IS RESPONSIBLE TO DETERMINE THE SUITABILITY OF THE PRODUCT FOR ITS INTENDED USE, PRIOR TO USING THE PRODUCT, AND THE ORIGINAL PURCHASER ASSUMES ALL RESPONSIBILITY AND RISK IN CONNECTION THEREWITH.

PATENT INFORMATION:

This product is covered by multiple US issued patents.

PAT US 9,771,024 B2

PAT US 8,833,781B2

PAT US D718,1955

Have feedback, thoughts, or suggestions?

Please email us!

We would be happy to make our instructions easier to read and value your feedback.

WARRANTY@ROCKSLIDEENGINEERING.COM