



INSTALLATION INSTRUCTIONS

PART No.

FB15111

Jeep® '18-Current JL Wrangler
Entry Guards



REQUIRED TOOLS

Vehicle Paint Safe Cleaning
Supplies

KIT CONTAINS

Front Entry Guard (Driver/Passenger)
Rear Entry Guard (Driver/Passenger)

QTY

1ea
1ea

1) PREPARE YOUR VEHICLE

With vehicle paint safe cleaners and cloths, clean your vehicle's entry ways free of dirt and debris to help with the installation.



arrow.



Press down firmly and repeat on the opposite side.

2) REMOVE TAPE BACKING

The proper placement of each guard is indicated by size and by the direction our logo faces. Larger guards are for the front seats, and the Logo on every guard always faces the rear of the vehicle.

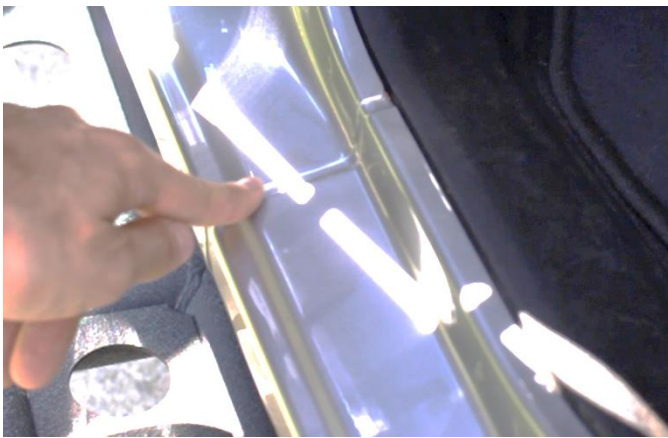


Starting with the front larger guard, pull the adhesive backings away.

3) INSTALL

Count 5 arrows in from the rear (Logo points to the rear). Place the guard so that your interior panel and entryway seams lie between the fifth and sixth

With the smaller rear guard, count 2 arrows from the front. Place the guard so that your entry way seam lies between the second and third arrow.



Press down firmly and repeat on the opposite side.

4) ENJOY YOUR NEW FISHBONE ENTRY GUARDS!!

