

MOUNTING INSTRUCTIONS

ART NO. MIMBSP19 MERCEDES SPRINTER



About 3 h.

PART NO.

Double light bar kit

MB-PX1210SP19 XIL-PX1210.12

MB-XPRH3SSP19 XPR-H3S

MB-XPRH6ESP19 XPR-H6E



INCLUDED IN THE PACKAGE:

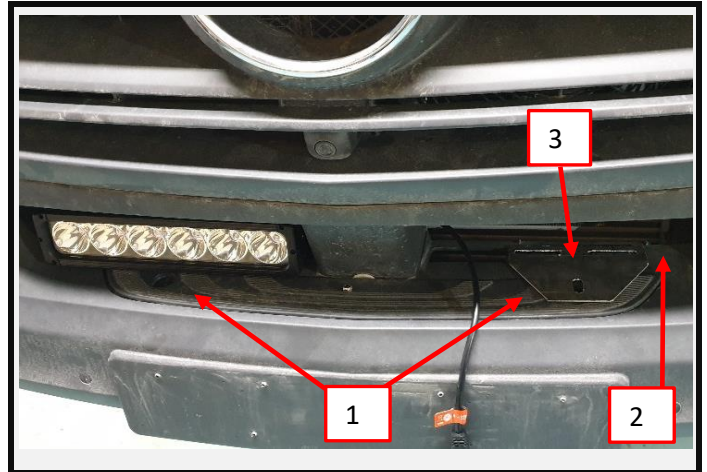
- 2 pcs LIGHT BARS
- 2 pcs MTG- 2053 (VX bracket)
- 1 pcs M8-HIGH1150 (Canbus adaptor)
- 4 pcs 0412927 (Washer 7,4x22x2)

The dual lightbar packages includes extra brackets, bolts and an extra harness (P-DY2M1F).



STEP 1.

1. Remove the two bolts in the footstep on the front of the car.
2. Cut out the mesh in the bumper behind the footstep.
3. Slide the bracket MTG-2053 Between the plastic bumper and the steel bumper from behind and fasten it with the original footstep bolts (1).
4. Mount the lightbars on the brackets.



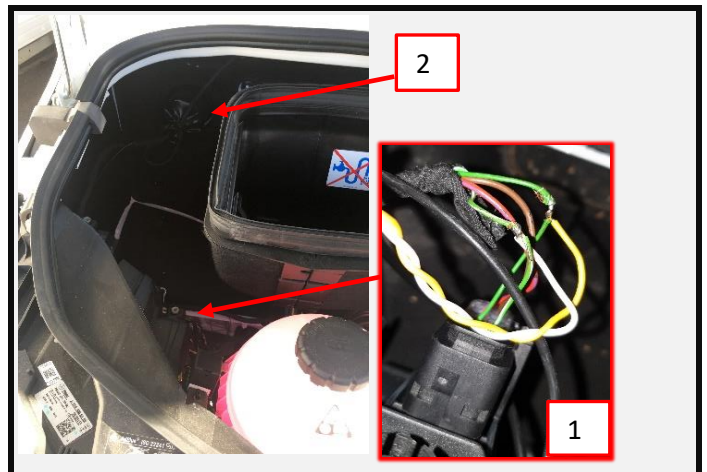
STEP 2.

Use a long 1/4" extension to reach the light bar brackets nuts from beneath.



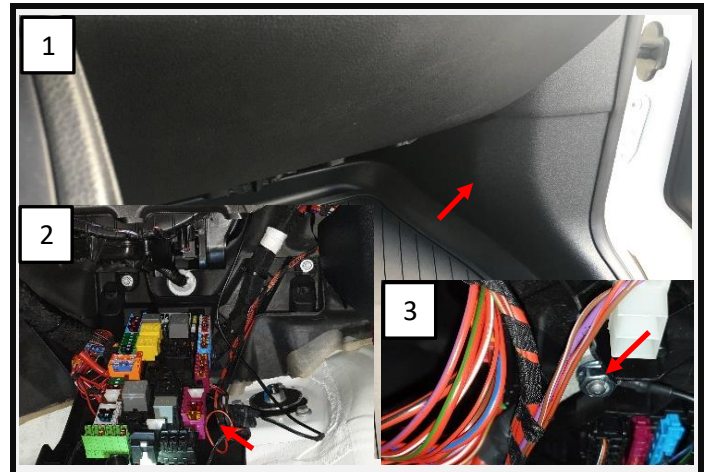
STEP 3.

1. Locate the Green and Green/White wire going to the right headlight. Solder the Yellow wire from the wiring harness to the Green headlight wire and the White wire from the wiring harness to the Green/White headlight wire.
2. Get the wire with the fuse and ring connector through the bulkhead using the gromet in the right hand corner of the engine compartment.



STEP 4.

1. Remove the right hand side kick panel.
2. Locate the fusebox behind the kick panel
3. Underneath the fuse box you will find a bolt. Connect the positive ring terminal to that bolt.



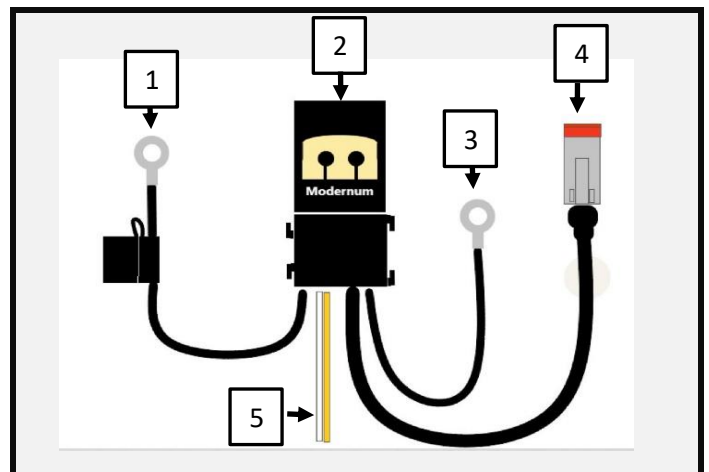
STEP 5.

Wiring harness (M8-HIGH1150)

1. Fuse and positive ring terminal.
2. CAN relay.
3. Ground ring terminal.
4. Connector.
5. Yellow and White CAN wires.

Make sure that the cables are clear of all sharp edges and are secured with cable straps.

NOTE! For the double lightbar kit, use the extra harness (P-DY2M1F) to connect the lightbars together.



STEP 6.

Measure the light bar and trim the plastic in the bumper. Make sure that the bar has some space around it. Make final adjustments on the bar (Should be angled up a few degrees to achieve the correct light length!). Tighten all screws and make sure that all cables are fastened properly. Mount the bumper in reverse order and make a final test of the light.



Halo: Connect the Yellow cable from the lightbar to position light if you want to use the Halo function.

VISION X EUROPE
SVARVARVÄGEN 14
13238 SALTSJÖ-BOO SWEDEN

WWW.VISIONXEUROPE.COM
INFO@VISIONXEUROPE.COM







VISION X EUROPE
SVARVARVÄGEN 14
13238 SALTSJÖ-BOO SWEDEN

WWW.VISIONXEUROPE.COM
INFO@VISIONXEUROPE.COM





VISION X EUROPE
SVARVARVÄGEN 14
13238 SALTSJÖ-BOO SWEDEN

WWW.VISIONXEUROPE.COM
INFO@VISIONXEUROPE.COM



VISION X EUROPE
SVARVARVÄGEN 14
13238 SALTSJÖ-BOO SWEDEN

WWW.VISIONXEUROPE.COM
INFO@VISIONXEUROPE.COM

